

Maintaining Your Server and Databases

CREATING A DATABASE

If you want to add a new database to a server that is already running other database(s):

1. Go to the kforumd.conf file and add another database line under Databases.

Example

```
"~/KnowledgeBuildingI";
~/KnowledgeBuildingII";
~/KBC";
```

2. Save and Close kforumd.conf.
3. Click the Start menu on the bottom of the screen and select Run. A Run window will appear.
4. Type: `cmd`
Press OK.
A command window will come-up.
5. Type: `cd C:\KnowledgeForum`
6. Type: `.\kfcreatedb -s MyDatabase`
Where MyDatabase is replaced by the name you added in the kforumd.conf file.

Example

```
.\kfcreatedb -s KBC
```

7. Close the command window
8. Click on the Start menu, hold the cursor over Programs, then Admin Tools, and finally click on Services. A Services window will open.
9. Scroll down (It is an alphabetical list) to find, Knowledge Forum. Click on it to highlight it.
10. Click on Restart to restart the server.
11. Wait several minutes for the server to update before trying to access the database in your browser.

RESTARTING THE SERVER

If your server goes down and you need to restart it:

1. Click on the Start menu, hold the cursor over Programs, then Admin Tools, and finally click on Services. A Services window will open.
2. Scroll down (It is an alphabetical list) to find, Knowledge Forum. Click on it to highlight.
3. Click on Restart to restart the server.
4. Wait several minutes for the server to update before trying to access the database in your browser.



KNOWLEDGE FORUM® 4.7

A D M I N I S T R A T O R S

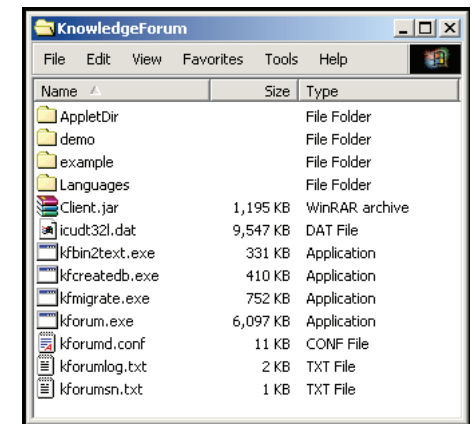
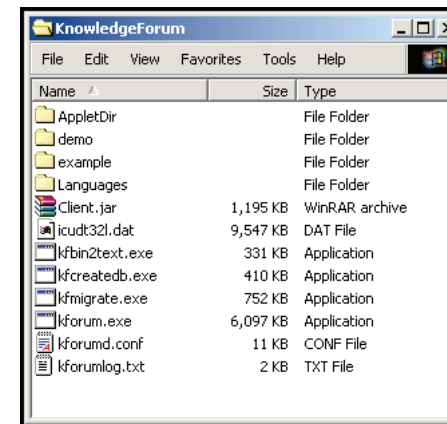
• S E R V E R Q U I C K S T A R T C A R D • • W I N D O W S •

This card will help the system administrator set-up a Knowledge Form 4.7 server on Windows.

BEFORE YOU START

Your Windows server machine must have Windows NT or higher. Before you begin, make sure you have the following items:

1. IP address of the server machine or its name.
2. Download the Knowledge Forum server. Unzip KnowledgeForum47-Windows.zip. In the folder, you will find a KnowledgeForum folder like the one shown on the left below.
3. You will receive separately a kforumsn.txt file that contains your serial number. Put that file in the KnowledgeForum folder as shown in the picture to the right. This file is required for your server to run.



Knowledge Forum runs as a service on your Windows server.

USING KNOWLEDGE FORUM

All databases created as described in this Quick Start Card will be available by typing in the name of your server in your browser:

To access the databases in Basic or Enhanced mode, open a browser:

Type: `http://host.domain.edu`

To access the databases in Lite mode:

1. In a browser (you only need to do this once):
Type: `http://host.domain.edu/kforum`
This will create the file: KnowledgeForum.jnlp on your machine and launch the Lite version.
2. To restart the Lite version, click KnowledgeForum.jnlp to start Knowledge Forum or repeat step 1.

Getting Started



MOVING THE KNOWLEDGE FORUM APPLICATION TO YOUR HARD DRIVE

1. Move the KnowledgeForum folder onto the server machine. Highlight it. Go to the Edit menu and select Copy.
 2. Double-click on the My Computer icon on your desktop.
 3. You will see your C:/ drive icon in the window; double-click on it.
 4. Go to the Edit menu and select Paste.
- You have now created a new directory, KnowledgeForum, on your C drive.



CHANGING THE CONFIGURATION FILE

1. Go to the KnowledgeForum folder on your C:/ drive. You will find a kforumd.conf file. Double-click on the kforumd.conf. (This file should open in text editor on your machine. If it does not, find a text editor and open it.)
2. Find the section called Databases. You will see:


```
"~/example";
```

 Change the word "example" to name of the database you want to create.

Example

```
"~/KnowledgeBuildingI";
```

If you will be opening another database, add another line in the same format with different names.

Example

```
"~/KnowledgeBuildingI";
"~/KnowledgeBuildingII";
```

3. Scroll down to "HTTPServer" portion of the kforumd.conf file. Replace "host.domain.com" with domain name or IP address of your server machine.


```
Host = "host.domain.com";
```

Example

```
Host = "kforumhost.motion.com";
```

or

Example

```
Host = "12.23.23.12";
```

4. Save and Close kforumd.conf.

Getting Started (continued)



SETTING UP THE SERVER

1. Click the Start menu on the bottom of the screen and select Run. A Run window will appear.
2. Type: `cmd`
Press OK.
A command window will come-up.
3. Type: `C:\KnowledgeForum\kforum.exe -i`
This tells the Knowledge Forum server to install itself as a service.



CREATING A DATABASE

1. Make sure you are still in the command window
2. Type: `cd C:\KnowledgeForum`
3. Type: `.\kfcreatedb -s MyDatabase`
Where MyDatabase is replaced by the name you added in the kforumd.conf file.

Example

```
.\kfcreatedb -s KnowledgeBuildingI
.\kfcreatedb -s KnowledgeBuildingII
```

If you don't have 4.5 databases that you want to convert, go to STARTING THE SERVER.



CHANGING A 4.5 DATABASE

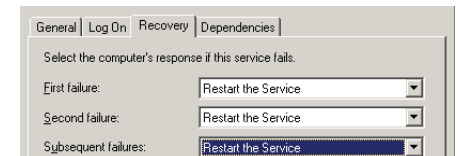
- Make sure you are the command window and have your 4.5 database in the KnowledgeForum folder
- Type: `.\kfmigrate -o MyOldDB.kdb -s MyNewDB`

This will create a new database folder called MyNewDB in the KnowledgeForum folder containing an empty attachment folder and a file called tuplestore (that is the database). You need to manually move all the attachments and the movies into this new attachment folder.



STARTING THE SERVER

1. Click the Start menu on the bottom of the screen, hold the cursor over Programs, then Admin Tools, and finally click Services. A Services window will open.
2. Scroll down (It is an alphabetical list) to find, Knowledge Forum. Click on it to highlight.
3. Press Start in the Service window to run the *Knowledge Forum* server.
4. Right-click on the Knowledge Forum (already highlighted). A new window appears.
5. Select Properties. This will bring up the Properties window.
 - a. In the General tab, set Startup type to Automatic. This will cause *Knowledge Forum* to be launched when server machine reboots.
 - b. In the Recovery tab, set First failure, Second failure and Subsequent failures to Restart the Service. This will reboot *Knowledge Forum* server should it crash for some reason.
6. Close or minimize the Service window.



Note: You can add languages, specify that a database group only see their database (if you are running more than one database) and other advanced features. For help, see: the documentation in the kforumd.conf file or e-mail: helpdesk@learn.motion.com for more information.